

## HOW YOUR SUPPORT IS INVESTED IN OUR COMMUNITY

Seattle Goodwill Industries is a 501(c)(3) nonprofit organization, and is accountable to the community for our effectiveness in providing results-driven job training and education, and for the efficiency with which we use the resources you entrust to us. That's why 85% of all financial contributions and other income (plus net) proceeds from our retail thrift operations goes to support changing lives through jobs—now and in the future. With community support we help the people who, even during a good economy, fall through the cracks of society in finding and keeping good jobs—low-income single parents, immigrants, people of color, and those learning to speak English. Here is how we are investing your support in their future, and in the future of our community.

### 2014–2015 FINANCIAL INFORMATION\*

\*FISCAL YEAR 6/29/14 – 6/27/15

Sale of goods .....	104,030,317
Expenses related to collecting, processing, and sale of goods .....	(87,735,841)
<b>Net proceeds from retail thrift stores .....</b>	<b>16,294,476</b>
Financial contributions from individuals, corporations, foundations, and government grants .....	2,590,004
Other income (including investments, interest, and dividends) .....	1,269,187
<b>Available funding .....</b>	<b>20,153,667</b>
Job training and basic education classes and services .....	(10,823,899)
Management and general expenses .....	(2,419,506)
Fundraising expenses .....	(572,180)
<b>Increase in net assets .....</b>	<b>6,338,082</b>

### PERCENT OF AVAILABLE FUNDING INVESTED IN CHANGING LIVES THROUGH JOBS NOW AND IN THE FUTURE

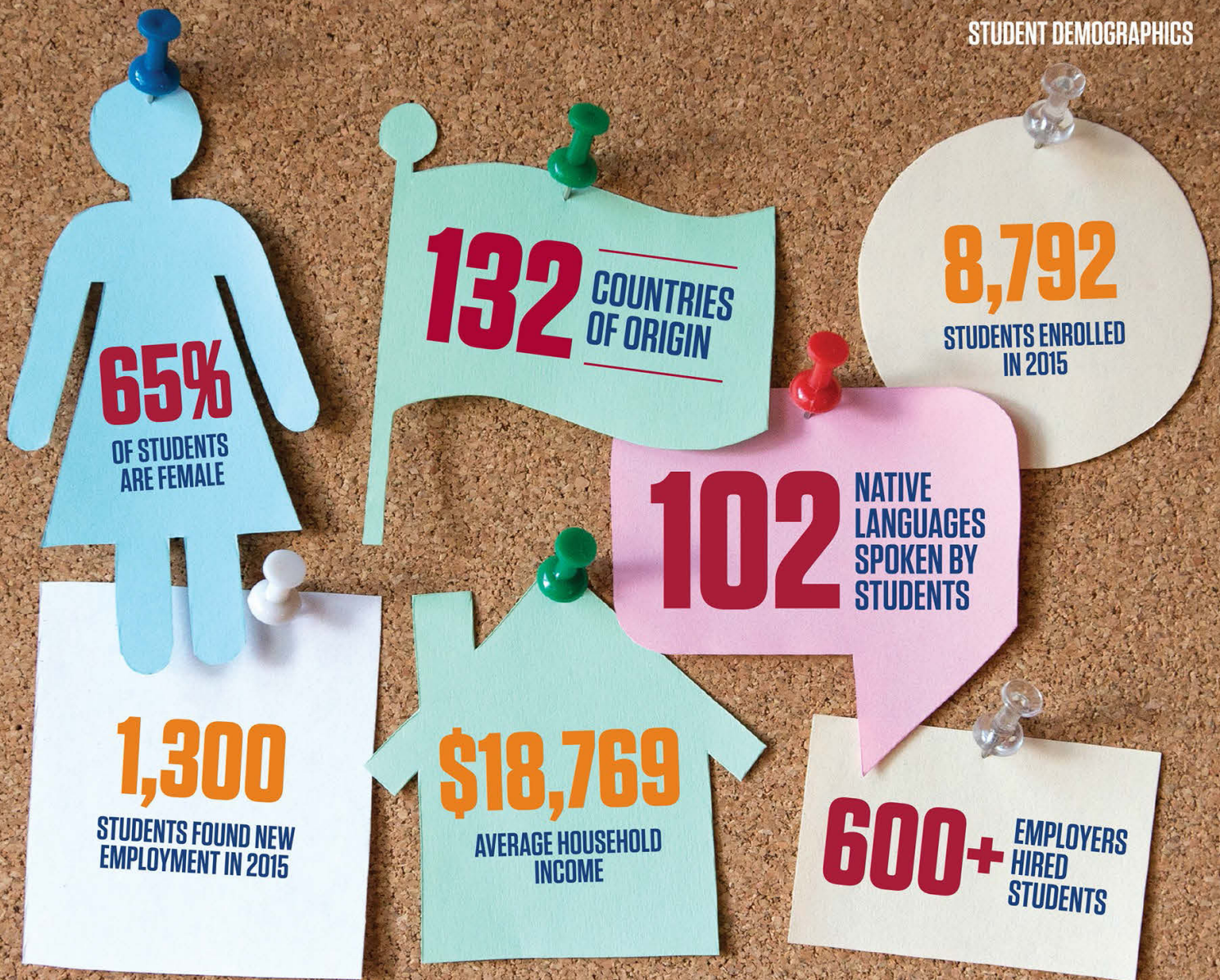
Job training and basic education classes and services .....	10,823,899
Increase in net assets .....	6,338,082
<b>Total .....</b>	<b>17,161,981</b>
Available funding .....	20,153,667
Percent .....	85.16%

### PERCENT OF AVAILABLE FUNDING SPENT ON MANAGEMENT, GENERAL AND FUNDRAISING

Management and general expenses .....	2,419,506
Fundraising expenses .....	572,180
<b>Total Supporting Services .....</b>	<b>2,991,686</b>
Available Funding .....	20,153,667
Percent .....	14.84%



## STUDENT DEMOGRAPHICS



## IMPACTS & OUTCOMES

### Increased Skills

Retail Graduation .....	77%
ABE Class Completion ....	72%
GED/HS Diploma .....	28
Citizenship .....	38

### Student Employment

Gained Employment .....	1,300
Retail Grad Employment Rate .....	83%
Avg. Wage .....	\$11.60
Avg. Income Increase .....	\$13,994

### Job Retention

30 Days .....	89%
90 Days .....	85%
6 Months .....	76%
1 Year .....	68%

### Further Education

158 Enrolled
<b>VITA Tax Prep</b>
4,072 Individuals
\$6 Million Returned

## SUPPORT SERVICES PROVIDED

### Support Service Dollar Values

Direct Services .....	\$196,048
Leveraged Services .....	\$168,760
Instances of Service .....	7,411
Students Served .....	2,737

### Instances Provided By Category

Healthcare .....	1,525
Self-Sufficiency .....	3,166
Other .....	2,720

### Transportation Services

Dollar Value .....	\$167,616
Students Served .....	2,074
% of students overall .....	31%